



Vincent Buda & Co.

TRUST THE BUDA SINCE 1957

Budabar

Product Code: 85BUD (85mmx7mm Flat Bar)

Stock lengths - 800mm, 900mm, 1000mm, 1100mm, 1200mm

Product Code: 100BUD (100mmx100mmx6mm Buda Bar)

Stock lengths - 900mm, 1200mm, 1500mm, 1800mm, 2100mm, 2400mm, 2700mm

Product Code: 150BUD (150mmx100mmx6mm Buda Bar)

Stock lengths - 1800mm, 2100mm, 2400mm, 2700mm, 3000mm, 3300mm, 3600mm, 4000mm



R Bar / Rendermesh Lintel

Product Code: 100RB (100mmx100mm R Bar - 4 Render)

Stock lengths - 900mm, 1200mm, 1500mm, 1800mm, 2100mm, 2400mm

Product Code: 150RB (150mmx100mm R Bar - 4 Render)

Stock lengths - 1800mm, 2100mm, 2400mm, 2700mm, 3000mm, 3300mm, 3600mm, 4000mm



Budabar T Bar

Product Code: 2006T

(200mmx6mm / 200mmx6mm Galv T Bar)

Stock lengths - 1200mm, 1500mm, 1800mm, 2100mm

Product Code: 2008T

(200mmx6mm / 200mmx8mm Galv T Bar)

Stock lengths - 2400mm, 2700mm, 3000mm, 3300mm

Product Code: 20010T

(200mmx6mm / 200mmx10mm Galv T Bar)

Stock lengths - 3600mm, 3900mm, 4200mm, 4500mm, 4800mm, 5100mm, 5400mm, 5700mm

Product Code: 20020010

(200mmx10mm / 200mmx10mm Galv T Bar)

Stock lengths - 6000mm, 6300mm





Vincent Buda & Co.

TRUST THE BUDA SINCE 1957

Concrete Lintels

Product Code: CON80L (Concrete Lintel 110mmx80mm)

Stock lengths - 1000mm, 1200mm, 1500mm, 1800mm, 2100mm, 2400mm, 2700mm, 3000mm, 3300mm, 3600mm, 4000mm



Product Code: CON170L (Concrete Lintel 170mmx110mm)

Stock lengths - 1800mm, 2100mm, 2400mm, 2700mm, 3000mm, 3300mm, 3600mm, 4000mm, 4200mm, 4500mm

Galintel Rendabar

Product Code: 100R (Galintel Rendabar 100mmx100mm)

Stock lengths - 900mm, 1200mm, 1500mm, 1800mm, 2100mm, 2400mm



Product Code: 150R (Galintel Rendabar 150mmx100mm)

Stock lengths - 1800mm, 2100mm, 2400mm, 2700mm, 3000mm, 3300mm, 3600mm, 4000mm

Galintel T Bar—To suit 230 Wall

Product Code: 2002007

(TBar Gal 200mmx7mm / 200mmx7mm)

Stock lengths - 1800mm, 2100mm, 2400mm, 2700mm, 3000mm, 3300mm

Product Code: 2002009

(TBar Gal 200mmx9mm / 200mmx9mm)

Stock lengths - 3600mm, 3900mm, 4200mm, 4500mm, 4800mm, 5100mm, 5400mm, 5700mm, 6000mm, 6300mm



Galintel Cavi T Bar Lintel—To suit 270 Wall

Product Code: 180CAVI

(Galintel Cavi TBar 180mmx8mm (Vertical) x 250mmx8mm (Platform))

Stock lengths - 2700mm, 3000mm, 3300mm, 3600mm, 3900mm, 4200mm, 4500mm, 4800mm, 5100mm, 5400mm, 5700mm, 6000mm, 6300mm



Product Code: 240CAVI

(Galintel Cavi TBar 240mmx8mm (Vertical) x 250mmx8mm (Platform))

Stock lengths - 2700mm, 3000mm, 3300mm, 3600mm, 3900mm, 4200mm, 4500mm, 4800mm, 5100mm, 5400mm, 5700mm, 6000mm, 6300mm



Vincent Buda & Co.

TRUST THE BUDA SINCE 1957

Hot Rolled Angle

Product Code: 1001008

(Archbar Gal 100mmx100mmx8mm)

Stock lengths - 900mm, 1200mm, 1500mm, 1800mm, 2100mm, 2400mm, 2700mm

Product Code: 15010010

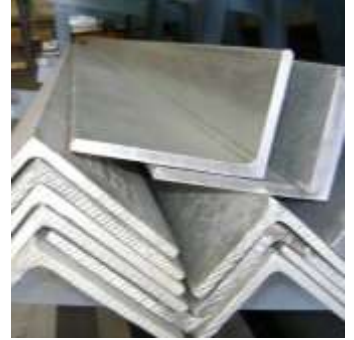
(Archbar Gal 150mmx100mmx10mm)

Stock lengths - 1800mm, 2100mm, 2400mm, 2700mm, 3000mm, 3300mm, 3600mm, 4000mm, 4500mm, 5000mm, 5500mm, 6000mm

Product Code: 15010013

(Archbar Gal 150mmx100mmx13mm)

Stock lengths - 4000mm, 6000mm



10mm Flat Bars

Product Code: 7510 (Flat Bar Gal 75mmx10mm)

Stock lengths - 600mm, 700mm, 800mm, 900mm, 1000mm, 1100mm, 1200mm, 1300mm, 1400mm, 1500mm, 1600mm, 1700mm, 1800mm, 1900mm, 2000mm

Product Code: 10010 (Flat Bar Gal 100mmx10mm)

Stock lengths - 800mm, 900mm, 1000mm, 1100mm, 1200mm, 1300mm, 1400mm, 1500mm, 1800mm, 2000mm





Vincent Buda & Co.

TRUST THE BUDA SINCE 1957

Metal Door Frames

Non Rated Door Frame 114mm Throat

(Suit 110mm Brickwork or 90mm Stud with 10mm Plaster Board)

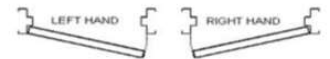
Assembled, 2 Welded Hinges, Unprimed, Standard Striker, Rubber Buffers & Spreader Bars



Product Code	Description
920LN114	924x2065 Left Hand N114 2 Welded Hinges Assembled Unprimed
920RN114	924x2065 Right Hand N114 2 Welded Hinges Assembled Unprimed
870LN114	874x2065 Left Hand N114 2 Welded Hinges Assembled Unprimed
870RN114	874x2065 Right Hand N114 2 Welded Hinges Assembled Unprimed
820LN114	824x2065 Left Hand N114 2 Welded Hinges Assembled Unprimed
820RN114	824x2065 Right Hand N114 2 Welded Hinges Assembled Unprimed
770LN114	774x2065 Left Hand N114 2 Welded Hinges Assembled Unprimed
770RN114	774x2065 Right Hand N114 2 Welded Hinges Assembled Unprimed
720LN114	724x2065 Left Hand N114 2 Welded Hinges Assembled Unprimed
720RN114	724x2065 Right Hand N114 2 Welded Hinges Assembled Unprimed
620LN114	624x2065 Left Hand N114 2 Welded Hinges Assembled Unprimed
620RN114	624x2065 Right Hand N114 2 Welded Hinges Assembled Unprimed
520LN114	524x2065 Left Hand N114 2 Welded Hinges Assembled Unprimed
520RN114	524x2065 Right Hand N114 2 Welded Hinges Assembled Unprimed
1046DN11	Double Door 1046x2065 N114 2 Welded Hinges Assembled Unprimed
1246DN11	Double Door 1246x2065 N114 2 Welded Hinges Assembled Unprimed
1446DN11	Double Door 1446x2065 N114 2 Welded Hinges Assembled Unprimed
1646DN11	Double Door 1446x2065 N114 2 Welded Hinges Assembled Unprimed
740SDN11	Sliding Door 740x2055 SD114 Assembled Unprimed
790SDN11	Sliding Door 790x2055 SD114 Assembled Unprimed
820LSO	824x2065 Left Hand N114 2 Welded Hinges Assembled Unprimed with Storm Molds <u>Out</u>
820RSO	824x2065 Right Hand N114 2 Welded Hinges Assembled Unprimed with Storm Molds <u>Out</u>
820LSI	824x2065 Left Hand N114 2 Welded Hinges Assembled Unprimed with Storm Molds <u>In</u>
820RSI	824x2065 Right Hand N114 2 Welded Hinges Assembled Unprimed with Storm Molds <u>In</u>
720LLN11	724x2065 Left Hand N114 2 Welded Lift off Hinges Assembled Unprimed
720RLN11	724x2065 Right Hand N114 2 Welded Lift off Hinges Assembled Unprimed
770LLN11	774x2065 Left Hand N114 2 Welded Lift off Hinges Assembled Unprimed
770RLN11	774x2065 Right Hand N114 2 Welded Lift off Hinges Assembled Unprimed
820LLN11	824x2065 Left Hand N114 2 Welded Lift off Hinges Assembled Unprimed
820RLN11	824x2065 Right Hand N114 2 Welded Lift off Hinges Assembled Unprimed
920LLN11	924x2065 Left Hand N114 2 Welded Lift off Hinges Assembled Unprimed
920RLN11	924x2065 Right Hand N114 2 Welded Lift off Hinges Assembled Unprimed

Stud Clips

Product Code	Description
CLIPS10	Stud Clips 10mm
CLIPS13	Stud Clips 13mm
CLIPS6	Stud Clips 6mm (Special order)





Vincent Buda & Co.

TRUST THE BUDA SINCE 1957

Metal Door Frames

Non Rated Door Frame 93mm Throat

(Suit 90mm Brickwork or 64mm Stud with 13mm Plaster Board)

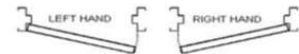
Assembled, 2 Welded Hinges, Unprimed, Standard Striker, Rubber Buffers & Spreader Bars



Product Code	Description
920LN93	924x2065 Left Hand N93 2 Welded Hinges Assembled Unprimed
920RN93	924x2065 Right Hand N93 2 Welded Hinges Assembled Unprimed
870LN93	874x2065 Left Hand N93 2 Welded Hinges Assembled Unprimed
870RN93	874x2065 Right Hand N93 2 Welded Hinges Assembled Unprimed
820LN93	824x2065 Left Hand N93 2 Welded Hinges Assembled Unprimed
820RN93	824x2065 Right Hand N93 2 Welded Hinges Assembled Unprimed
770LN93	774x2065 Left Hand N93 2 Welded Hinges Assembled Unprimed
770RN93	774x2065 Right Hand N93 2 Welded Hinges Assembled Unprimed
720LN93	724x2065 Left Hand N93 2 Welded Hinges Assembled Unprimed
720RN93	724x2065 Right Hand N93 2 Welded Hinges Assembled Unprimed
620LN93	624x2065 Left Hand N93 2 Welded Hinges Assembled Unprimed
620RN93	624x2065 Right Hand N93 2 Welded Hinges Assembled Unprimed
520LN93	524x2065 Left Hand N93 2 Welded Hinges Assembled Unprimed
520RN93	524x2065 Right Hand N93 2 Welded Hinges Assembled Unprimed
1046DN93	Double Door 1046x2065 N93 2 Welded Hinges Assembled Unprimed
1246DN93	Double Door 1246x2065 N93 2 Welded Hinges Assembled Unprimed
1446DN93	Double Door 1446x2065 N93 2 Welded Hinges Assembled Unprimed
1646DN93	Double Door 1646x2065 N93 2 Welded Hinges Assembled Unprimed
720LLN93	724x2065 Left Hand N93 2 Welded Lift off Hinges Assembled Unprimed
720RLN93	724x2065 Right Hand N93 2 Welded Lift off Hinges Assembled Unprimed
770LLN93	774x2065 Left Hand N93 2 Welded Lift off Hinges Assembled Unprimed
770RLN93	774x2065 Right Hand N93 2 Welded Lift off Hinges Assembled Unprimed
820LLN93	824x2065 Left Hand N93 2 Welded Lift off Hinges Assembled Unprimed
820RLN93	824x2065 Right Hand N93 2 Welded Lift off Hinges Assembled Unprimed
920LLN93	924x2065 Left Hand N93 2 Welded Lift off Hinges Assembled Unprimed
920RLN93	924x2065 Right Hand N93 2 Welded Lift off Hinges Assembled Unprimed

Stud Clips

Product Code	Description
CLIPS10	Stud Clips 10mm
CLIPS13	Stud Clips 13mm
CLIPS6	Stud Clips 6mm





Vincent Buda & Co.

TRUST THE BUDA SINCE 1957

Metal Door Frames

Fire Rated Door Frame

Assembled, 2 Welded Hinges, Unprimed, Standard Striker, Rubber Buffers & Spreader Bars



Throat 114mm (110 Brick Only)

Product Code	Description
820LF114	824x2065 Left Hand F114 2 Welded Hinges Assembled Unprimed
820RF114	824x2065 Right Hand F114 2 Welded Hinges Assembled Unprimed
920LF114	924x2065 Left Hand F114 3 Welded Hinges Assembled Unprimed
920RF114	924x2065 Right Hand F114 3 Welded Hinges Assembled Unprimed

Throat 145mm (140 Brick or Block Only)

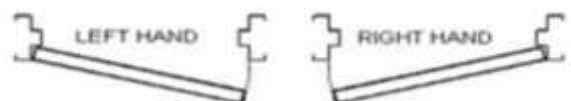
Product Code	Description
820LF145	824x2065 Left Hand F145 2 Welded Hinges Assembled Unprimed
820RF145	824x2065 Right Hand F145 2 Welded Hinges Assembled Unprimed

Throat 152mm (150 Brick Only)

Product Code	Description
820LF152	824x2065 Left Hand F152 2 Welded Hinges Assembled Unprimed
820RF152	824x2065 Right Hand F152 2 Welded Hinges Assembled Unprimed
920LF152	924x2065 Left Hand F152 3 Welded Hinges Assembled Unprimed
920RF152	924x2065 Right Hand F152 3 Welded Hinges Assembled Unprimed

Throat 193mm (190 Brick Only)

Product Code	Description
820LF193	824x2065 Left Hand F193 2 Welded Hinges Assembled Unprimed
820RF193	824x2065 Right Hand F193 2 Welded Hinges Assembled Unprimed
920LF193	924x2065 Left Hand F193 3 Welded Hinges Assembled Unprimed
920RF193	924x2065 Right Hand F193 3 Welded Hinges Assembled Unprimed





Vincent Buda & Co.

TRUST THE BUDA SINCE 1957

Fire Doors

820mm

Description	Product Codes		
	MDF (1 HOUR)	Duracoat (1 HOUR)	Duracoat (2 HOURS)
2010mm x 820mm x 35mm	FD2010820M1	FD2010820D1	FD2010820D2
2015mm x 820mm x 35mm	FD2015820M1	FD2015820D1	FD2015820D2
2020mm x 820mm x 35mm	FD2020820M1	FD2020820D1	FD2020820D2
2025mm x 820mm x 35mm	FD2025820M1	FD2025820D1	FD2025820D2
2030mm x 820mm x 35mm	FD2030820M1	FD2030820D1	FD2030820D2
2045mm x 820mm x 35mm	FD2045820M1	FD2045820D1	FD2045820D2
2050mm x 820mm x 35mm	FD2050820M1	FD2050820D1	FD2050820D2
2055mm x 820mm x 35mm	FD2055820M1	FD2055820D1	FD2055820D2
2060mm x 820mm x 35mm	FD2060820M1	FD2060820D1	FD2060820D2



920mm

Description	Product Codes		
	MDF (1 HOUR)	Duracoat (1 HOUR)	Duracoat (2 HOURS)
2010mm x 920mm x 35mm	FD2010920M1	FD2010920D1	FD2010920D2
2015mm x 920mm x 35mm	FD2015920M1	FD2015920D1	FD2015920D2
2020mm x 920mm x 35mm	FD2020920M1	FD2020920D1	FD2020920D2
2025mm x 920mm x 35mm	FD2025920M1	FD2025920D1	FD2025920D2
2030mm x 920mm x 35mm	FD2030920M1	FD2030920D1	FD2030920D2
2045mm x 920mm x 35mm	FD2045920M1	FD2045920D1	FD2045920D2
2050mm x 920mm x 35mm	FD2050920M1	FD2050920D1	FD2050920D2
2055mm x 920mm x 35mm	FD2055920M1	FD2055920D1	FD2055920D2
2060mm x 920mm x 35mm	FD2060920M1	FD2060920D1	FD2060920D2



Vincent Buda & Co.

TRUST THE BUDA SINCE 1957

Aluminium Dampcourse - 30 metre

0.3mm

Product Code	Description
11030ALC	110mm x 30 metre
23030ALC	230mm x 30 metre
30030ALC	300mm x 30 metre
35030ALC	350mm x 30 metre
38030ALC	380mm x 30 metre
45030ALC	450mm x 30 metre
60030ALC	600mm x 30 metre



Bitumen Coated Aluminium Standard Alcor . Super Alcor (0.45mm) is available on request.

Aluminium Dampcourse - 10 metre

Product Code	Description
11010ALC	110mm x 10 metre
23010ALC	230mm x 10 metre
30010ALC	300mm x 10 metre
35010ALC	350mm x 10 metre
38010ALC	380mm x 10 metre
45010ALC	450mm x 10 metre
60010ALC	600mm x 10 metre



0.3mm Bitumen Coated Aluminium Standard Alcor . Super Alcor (0.45mm) is available on request.

Plastic Dampcourse

Product Code	Description
110PDC	110mm x 30 metre
230PDC	230mm x 30 metre
300PDC	300mm x 30 metre
350PDC	350mm x 30 metre
380PDC	380mm x 30 metre
450PDC	450mm x 30 metre
600PDC	600mm x 30 metre



500um Plastic Dampcourse

Expansion Joint - Abelflex - Buda Joint

Product Code	Description
50ABELFL	50mm x 25 metre
75ABELFL	75mm x 25 metre
100ABELF	100mm x 25 metre
125ABELF	125mm x 25 metre
150ABELF	150mm x 25 metre
200ABELF	200mm x 25 metre
300ABELF	300mm x 25 metre
75ABSTIC	75mm x 25 metre (Sticky back)
100ABSTI	100mm x 25 metre (Sticky



Jointex

Product Code	Description
60JOINTE	60mm x 2.4 metre
75JOINTE	75mm x 2.4 metre
100JOINT	100mm x 2.4 metre
125JOINT	125mm x 2.4 metre
150JOINT	150mm x 2.4 metre



Malthoid

Product Code	Description
9020MALT	90mm x 20 metre
11020MAL	110mm x 20 metre
15020MAL	150mm x 20 metre
23020MAL	230mm x 20 metre
28020MAL	280mm x 20 metre



2 Ply Malthoid



Vincent Buda & Co.

TRUST THE BUDA SINCE 1957

Ties - Accessories

Product Code	Description	Image	Size
WALLRED	Wall Ties 175mm Red (Box of 500)		L: 185mm W: 70mm
VANEER	Vaneer Ties (Box of 150)		L: 150mm W: 20mm
STUBBY	Stubby Ties (Box of 150)		L: 100mm x 35mm W: 20mm
FRAME	Frame Ties (Box of 150)		L: 240mm x 50mm W: 25mm
A0610	Expansion Ties (Box of 20)		L: 275mm W: 40mm
EPASTI	Plastic Expansion Ties (Box of 50)		L: 350mm W: 45mm
A0626	Aligator Ties (Box of 10)		L: 250mm x 150mm W: 30mm
WEEPA	Weepa		NA
WEEPABU	Weepa (Bushfire)		NA
PUNCH30	Punch Strap 30mm x 30 metre		NA
STUBBYSS	Stubby Wall Ties Stainless Steel (Box of 150)		L: 100mm x 35mm W: 20mm
VANSS	Vaneer Ties Stainless Steel (Box of 150)		L: 150mm W: 20mm
WALLSS	Wall Ties Stainless Steel (Box of 250)		L: 185mm W: 70mm



Vincent Buda & Co.

TRUST THE BUDA SINCE 1957

Lead Flashing

Product Code	Description
23015LEA	230mm x 15kg x 6 metre
30015LEA	300mm x 15kg x 6 metre
35015LEA	350mm x 15kg x 6 metre
45015LEA	450mm x 15kg x 6 metre
60015LEA	600mm x 15kg x 6 metre
23020LEA	230mm x 20kg x 6 metre
30020LEA	300mm x 20kg x 6 metre
35020LEA	350mm x 20kg x 6 metre
45020LEA	450mm x 20kg x 6 metre
60020LEA	600mm x 20kg x 6 metre



Aluflash (lead free alternative)

Product Code	Description
300ALUFG	300mm x 5 metre
350ALUFG	350mm x 5 metre



Concrete Underlay

Product Code	Description
2BLACK	2m x 200um x 50 metre (Black)
2ORANGE	2m x 200um x 50 metre (Orange)
4BLACK	4m x 200um x 50 metre (Black)
4ORANGE	4m x 200um x 50 metre (Orange)



Pregressed Slipjoint

Product Code	Description
110PRE	110mm x 3 metre
140PRE	140mm x 3 metre
230PRE	230mm x 3 metre
270PRE	270mm (Vee) x 3 metre



Double Layer with grease in the middle

Metal Slipjoint Roll

Product	Description
11045MET	110mm x 45 metre
15045MET	150mm x 45 metre
23045MET	230mm x 45 metre
27045MET	270mm x 45 metre



Single Layer - Coil NO GREASE

Wakaflex

Product Code	Description
WAKA280G	Wakaflex Grey 280mm x 5 metres
WAKA280B	Wakaflex Black 280mm x 5 metres
WAKA370G	Wakaflex Grey 370mm x 5 metres

Ubiflex

Product Code	Description
UBI280T	Ubiflex Terracotta 280mm x 5 metres
UBI280B	Ubiflex Black 280mm x 5 metres
UBI370T	Ubiflex Terracotta 370mm x 5 metres
UBI370B	Ubiflex Black 370mm x 5 metres



Vincent Buda & Co.

TRUST THE BUDA SINCE 1957

Shower Grates (available on www.showerdrains.com.au)

Lines - 85mm x 20mm

	Product Codes											
	600mm	700mm	800mm	900mm	1000mm	1200mm	1500mm	1800mm	2100mm	2400mm	2700mm	3000mm
Centre	6020WCL4	7020WCL4	8020WCL4	9020WCL4	1020WCL4	1220WCL4	1520WCL4	1820WCL4	N/A	N/A	N/A	N/A
End	6020WEL4	7020WEL4	8020WEL4	9020WEL4	1020WEL4	1220WEL4	1520WEL4	1820WEL4	N/A	N/A	N/A	N/A
No	6020WNL4	7020WNL4	8020WNL4	9020WNL4	1020WNL4	1220WNL4	1520WNL4	1820WNL4	2120WNL4	2420WNL4	2720WNL4	3020WNL4

Brick - 85mm x 20mm

	Product Codes			
	900mm	1000mm	1200mm	1500mm
Centre	9020WCB4	1020WCB4	1220WCB4	1520WCB4
End	9020WEB4	1020WEB4	1220WEB4	1520WEB4
No	9020WNB4	1020WNB4	1220WNB4	1520WNB4

Custom Drains (Length and Outlets)

Product Code	Description
CUSTOML	Custom Length
CUSTOM38	Custom Outlet 38 diameter
CUSTOM50	Custom Outlet 50 diameter
CUSTOM76	Custom Outlet 76 diameter
CUSTOM80*	Custom Outlet 80 diameter
CUSTOM95*	Custom Outlet 95 diameter

*Only 100mm grate wide

Square - 85mm x 20mm

	Product Codes							
	600mm	700mm	800mm	900mm	1000mm	1200mm	1500mm	1800mm
Centre	6020WCS4	7020WCS4	8020WCS4	9020WCS4	1020WCS4	1220WCS4	1520WCS4	1820WCS4
End	6020WES4	7020WES4	8020WES4	9020WES4	1020WES4	1220WES4	1520WES4	1820WES4

Heelguard - 85mm x 20mm

	Product Codes											
	600mm	700mm	800mm	900mm	1000mm	1200mm	1500mm	1800mm	2100mm	2400mm	2700mm	3000mm
Centre	6020WCH4	7020WCH4	8020WCH4	9020WCH4	1020WCH4	1220WCH4	1520WCH4	1820WCH4	N/A	N/A	N/A	N/A
End	6020WEH4	7020WEH4	8020WEH4	9020WEH4	1020WEH4	1220WEH4	1520WEH4	1820WEH4	N/A	N/A	N/A	N/A
No	6020WNH4	7020WNH4	8020WNH4	9020WNH4	1020WNH4	1220WNH4	1520WNH4	1820WNH4	2120WNH4	2420WNH4	2720WNH4	3020WNH4

Tile Insert - 100mm x 30mm

	Product Codes											
	600mm	700mm	800mm	900mm	1000mm	1200mm	1500mm	1800mm	2100mm	2400mm	2700mm	3000mm
Centre	6030CT	7030CT	8030CT	9030CT	1030CT	1230CT	1530CT	1830CT	N/A	N/A	N/A	N/A
End	6030ET	7030ET	8030ET	9030ET	1030ET	1230ET	1530ET	1830ET	N/A	N/A	N/A	N/A
No	6030NT	7030NT	8030NT	9030NT	1030NT	1230NT	1530NT	1830NT	2130NT	2430NT	2730NT	3030NT



Brick Pattern



Lines Pattern



Square Pattern



Heelguard



Tile Insert



Vincent Buda & Co.

TRUST THE BUDA SINCE 1957

Shower Grates (available on www.showerdrains.com.au)

Lines - 100mm x 20mm

	Product Codes					
	600mm	800mm	900mm	1000mm	1200mm	1500mm
Centre Outlet	10060CL	10080CL	10090CL	10010CL	10012CL	10015CL
No Outlet	10060NL	10080NL	10090NL	10010NL	10012NL	10015NL

Custom Drains (Length and Outlets)

Refer to previous page for custom codes



Lines



Heelguard

Heelguard - 100mm x 22mm

	Product Codes								
	600mm	800mm	900mm	1000mm	1200mm	1500mm	2000mm	2500mm	3000mm
Centre Outlet	10060CH	10080CH	10090CH	10010CH	10012CH	10015CH	N/A	N/A	N/A
No Outlet	10060NH	10080NH	10090NH	10010NH	10012NH	10015NH	10020NH*	10025NH*	10030NH*

*Only available in grade 316 stainless steel

Small Floor Wastes

Outlet Size	Product Codes				
	300mm x 300mm x 65mm Heelguard	200mm x 200mm x 35mm Heelguard	115mm x 115mm x 20mm Heelguard	115mm x 115mm x 20mm Lines	115mm x 115mm x 20mm Square
95mm ¹	300HE95	200HE95	115HE95	115LI100	11511595
76mm ²	300HE76	200HE76	N/A	115LI80	11511575
45mm ³	N/A	N/A	115HE50	115LI50	11511545

¹Suitable for 100mm pipe

²Suitable for 80mm pipe

³Suitable for 50mm pipe

Pipe Size	Product Codes		
	110mm x 110mm Chrome Floor Waste (50 per box)	Bermuda Smart Tile Insert Drain (No puddle flange)	Mega Bermuda Smart Tile Insert Drain (with puddle flange)
100mm	VBC1045H	100SQCP	1001SQCP
80mm	N/A	1008SQCP	80SQCP
50mm	N/A	N/A	50SQCP



Heelguard



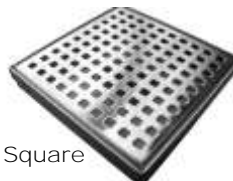
Mega Bermuda Smart Tile



Bermuda Smart Tile



Square



Chrome Floor Waste



Vincent Buda & Co.

TRUST THE BUDA SINCE 1957

Shower Grates (available on www.showergrates.com.au)

Description	Product Codes		
	Square	Heelguard	Tile Insert
70mm x 600mm x 22mm No Outlet	7060NS	7060NH	7060NT
70mm x 600mm x 22mm Centre Outlet	7060CS	7060CH	7060CT
70mm x 800mm x 22mm No Outlet	7080NS	7080NH	7080NT
70mm x 800mm x 22mm Centre Outlet	7080CS	7080CH	7080CT
70mm x 900mm x 22mm No Outlet	7090NS	7090NH	7090NT
70mm x 900mm x 22mm Centre Outlet	7090CS	7090CH	7090CT
70mm x 1000mm x 22mm No Outlet	7010NS	7010NH	7010NT
70mm x 1000mm x 22mm Centre Outlet	7010CS	7010CH	7010CT
70mm x 1200mm x 22mm No Outlet	7012NS	7012NH	7012NT
70mm x 1200mm x 22mm Centre Outlet	7012CS	7012CH	7012CT
70mm x 1500mm x 22mm No Outlet	7015NS	7015NH	7015NT
70mm x 1500mm x 22mm Centre Outlet	7015CS	7015CH	7015CT
70mm x 1800mm x 22mm No Outlet	7018NS	7018NH	7018NT
70mm x 1800mm x 22mm Centre Outlet	7018CS	7018CH	7018CT



Square



Heelguard



Tile Insert



Lines

Shower Grates (Ebay Only Special)

Description	Product Codes		
	Lines	Square	Heelguard
60mm x 600mm x 22mm	6060CL*	6060CS*	6060CH*
60mm x 800mm x 22mm	6080CL*	6080CS*	6080CH*
60mm x 1000mm x 22mm	6010CL*	6010CS*	6010CH*
60mm x 1200mm x 22mm	6012CL*	6012CS*	6012CH*

*Note: Not always in stock

If sold over the counter, you must adjust the stock number on Ebay

Corner Stainless Steel Shower Grates - Lines Only

Available Sizes	Product Codes		
	900mm x 900mm	1000mm x 1000mm	1200mm x 1200mm
Centre Outlet	909020CL	101020CL	121220CL
No Outlet	909020NL	101020NL	121220NL





Vincent Buda & Co.

TRUST THE BUDA SINCE 1957

Stainless Steel Box Grates

Available Sizes	Product Codes					
	140mm x 125mm <u>Heelguard</u>	110mm x 60mm <u>Heelguard</u>	85mm x 40mm <u>Heelguard</u>	85mm x 40mm <u>Lines Pattern</u>	85mm x 20mm <u>Lines Pattern</u>	85mm x 20mm <u>Heelguard</u>
1000mm	140HEEL	1060HEEL	1040HEEL	1040LINE	N/A	N/A
2000mm	140HEEL	2060HEEL	2040HEEL	2040LINE	2020LINE	2020HEEL
3000mm	140HEEL	N/A	N/A	N/A	N/A	N/A



Stainless Steel Outlets and Accessories

	Product Codes				
	140mm x 125mm <u>Heelguard</u>	110mm x 60mm <u>Heelguard</u>	85mm x 40mm <u>Heelguard</u>	85mm x 40mm <u>Lines Pattern</u>	85mm x 20mm <u>Lines Pattern</u>
Endcaps	140END	60END	40END	40END	20END
Outlets -	140OUT				
Outlet Plastic (40mm)		OUTPLAS	OUTPLAS	OUTPLAS	OUTPLAS
50mm Outlet		OUT50	OUT50	OUT50	OUT50
76mm Outlet		OUT76			OUT76
Joiners		60JOINER	40JOIN	40JOIN	20JOIN
Endcap Outlet	140ENDOUT	N/A	N/A	N/A	N/A



Stainless Steel Grate Only - Heelguard

Available Sizes	Product Codes
78mm x 1000mm	75SHEEL
100mm x 1000mm	100SHEEL



Stainless Steel Slot Drain and Accessories to suit

Available	Product Codes		Product Codes
1000mm	SLOT1	Outlet	SLOTOUT
2000mm	SLOT2	Joiner	SLOTJOIN
		End Cap	SLOTEND



Stainless Steel Grate and Frame

Available Sizes	Product Codes
300mm x 300mm	300SGF
450mm x 450mm	450SGF
600mm x 600mm	600SGF



Stainless Steel Pave In Grate and Frame

Available Sizes	Product Codes
300mm x 300mm x 35mm	300SPI
450mm x 450mm x 35mm	450SPI
600mm x 600mm x 35mm	600SPI



Vincent Buda & Co.

TRUST THE BUDA SINCE 1957

Aluminium Base Stainless Steel Top

	Product Codes							
	115mm x 80mm <u>Heelguard</u>	115mm x 80mm <u>Lines Pattern</u>	85mm x 40mm <u>Heelguard</u>	85mm x 40mm <u>Square Pattern</u>	85mm x 40mm <u>Tile Insert</u>	85mm x 25mm <u>Heelguard</u>	85mm x 25mm <u>Square Pattern</u>	85mm x 25mm <u>Tile Insert</u>
1000mm	A1080H	A1080L	A1040H	A1040S	A1040TI	A1025H	A1025S	A1025TI
2000mm	A2080H	A2080L	A2040H	A2040S	A2040TI	A2025H	A2025S	A2025TI



Heelguard



Square



Lines



Tile Insert

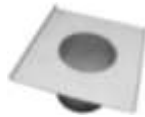
Aluminium Base Aluminium Top

	Product Codes		
	85mm x 25mm	85mm x 40mm	115mm x 80mm
1000mm	A1025AT	A1040AT	A1080AT
2000mm	A2025AT	A2040AT	A2080AT



Aluminium Outlets and Accessories

	Product Codes		
	115mm x 80mm	85mm x 40mm	85mm x 25mm
Endcap	A80END	A40END	A25END
Outlet	A80OUT	A40OUT	A25OUT
Joiner	A80JOIN	A40JOIN	A25JOIN





Vincent Buda & Co.

TRUST THE BUDA SINCE 1957

Galvanised Heelguard Box Grates

	Product Codes			
Available Sizes	125mm Wide x 80mm Deep	150mm Wide x 125mm Deep	200mm Wide x 170mm Deep	300mm Wide x 170mm Deep
1000mm	125HEEL	150HEEL	N/A	N/A
2000mm	125HEEL	150HEEL	200HEEL	300HEEL
3000mm	125HEEL	150HEEL	200HEEL	300HEEL



Galvanised Traditional Box Grates

	Product Codes		
Available Sizes	150mm Wide x 125mm Deep	200mm Wide x 170mm Deep	300mm Wide x 170mm Deep
1000mm	FS150	N/A	N/A
2000mm	FS150	FS200	FS300
3000mm	FS150	FS200	FS300



Outlets/End Caps/Joiners for Box Grates

Product Code	Description
125END	125mm End Cap
150END	150mm End Cap
200END	200mm End Cap
300END	300mm End Cap

Product Code	Description
125JOIN	125mm Joiner
150JOIN	150mm Joiner
200JOIN	200mm Joiner
300JOIN	300mm Joiner

Product Code	Description
125OUT	125mm Outlet
150OUT	150mm Outlet
200OUT	200mm Outlet
300OUT	300mm Outlet



Vincent Buda & Co.

TRUST THE BUDA SINCE 1957

Galvanised Frame & Grates

Available Lengths	Product Codes				
	170mm Medium	200mm Medium	300mm Medium	200mm Heavy	300mm Heavy
2000mm	170MM	200MM	300MM	200HEAVY	300HEAVY
3000mm	170MM	200MM	300MM	200HEAVY	300HEAVY



Galvanised Pit Grates (Grate & Frame)

Pit Grates	Product Codes					
	Not Hinged			Hinged		
	Light	Medium	Heavy	Light	Medium	Heavy
300mm x 300mm	300L	300M	300H	N/A	N/A	N/A
450mm x 450mm	450L	450M	450H	450LH	450MH	450HH
500mm x 500mm	500L	500M	500H	N/A	N/A	N/A
600mm x 600mm	600L	600M	600H	600LH	600MH	600HH
700mm x 700mm	700L	700M	700H	N/A	N/A	N/A
800mm x 800mm	800L	800M	800H	N/A	N/A	N/A
900mm x 600mm	900600L	900600M	900600H	900600LH	900600MH	900600HH
900mm x 900mm	N/A	N/A	N/A	900LH	900MH	900HH
1000mm x 1000mm	1000L	1000M	1000H	1000LH	1000MH	1000HH
1200mm x 1200mm	N/A	N/A	N/A	1200LH	1200MH	1200HH



Pit Grates	Double Hinged	
	Medium (40x5)	Heavy (50x5)
	900mm x 900mm	900MDH

Galvanised Heelguard Pit Grates (Grate & Frame)

Pit Grates	Product Codes	
	Light	Medium
300mm x 300mm	300LHEEL	300MHEEL
450mm x 450mm	450LHEEL	450MHEEL
600mm x 600mm	600LHEEL	600MHEEL
900mm x 600mm	9006LHEE	9006MHEE
900mm x 900mm	900LHEEL	900MHEEL
1200mm x 1200mm	N/A	1200MHEE





Vincent Buda & Co.

TRUST THE BUDA SINCE 1957

Galvanised Paving / Insert Pit Grates (Grate & Frame)

Pit Grates	Product Code
300mm x 300mm	300PI
450mm x 450mm	450PI
600mm x 600mm	600PI
900mm x 600mm	900600PI
900mm x 900mm	900PI



Galvanised Floor Plate Pit Grates (Grate & Frame)

Pit Grates	Product Code
450mm x 450mm	450MF
600mm x 600mm	600MF
900mm x 600mm	900600MF
900mm x 900mm	900MF



RHS

Available Lengths	Product Codes	
	200mm x 100mm x 4mm	150mm x 100mm x 4mm
2000mm	RHS200	RHS150
4000mm	RHS200	RHS150
6000mm	RHS200	RHS150
RHS Joiner to suit	RHSJOIN	RHSJOIN



Pit Accessories

Product Code	Description
STEPSBT	Steps - Bolt On
STEPS	Steps - Brick On
STEPYELL	Steps - Brick In (Yellow)
SSP250	Orifious 250x250
SSP300	Orifious 300x300

Maxi Mesh	
Product Code	Description
MAXI450	450mm x 450mm
600MAXI	600mm x 600mm
900X600M	900mm x 600mm
900MAXI	900mm x 900mm
3D450	3D 450mm x 400mm x 300mm
3D300	3D 300mm x 300mm x 180mm





Vincent Buda & Co.

TRUST THE BUDA SINCE 1957

Plastic Pit Only

Product Codes		
300mm x 300mm x 300mm <i>Please note these are internal pit sizes</i>	450mm x 450mm x 450mm	600mm x 600mm x 600mm
300PIT	450PIT	600PIT



Plastic Pit Risers

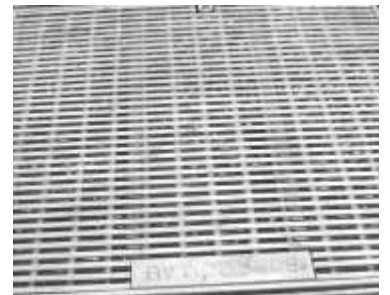
Product Codes		
300mm x 300mm x 150mm	450mm x 450mm x 300mm	600mm x 600mm x 300mm
300RISER	450RISER	600RISER



Please note these are internal pit sizes

Galvanised Pit Grates (Grate)

Pit Grates	Product Codes	
	Heelguard	Traditional
300mm x 300mm Light	300PITHL	300PITGL
450mm x 450mm Light	450PITHL	450PITGL
450mm x 450mm Medium	450PITHM	450PITGM
600mm x 600mm Light	600PITHL	600PITGL
600mm x 600mm Medium	600PITHM	600PITGM



Galvanised Trench Grate Only

Trench Grates	Product Codes	
	Heelguard	Traditional
125mm x 995mm x 16mm	HEEL125	N/A
150mm x 995mm x 20mm	HEEL150	GRATE150
200mm x 995mm x 25mm	HEEL200	GRATE200
300mm x 995mm x 25mm	HEEL300	GRATE300





Vincent Buda & Co.

TRUST THE BUDA SINCE 1957

Hoses

Hose	Product Code
20 metre hose with 12mm hose	HOSE20N
20 metre hose with 16mm hose	HOSE201N
30 metre hose with 16mm hose	HOSE30B

